



# MAKING ROOM

A Capital Campaign of  
The Peak Church



## The Peak Church is celebrating its 15th birthday this year!

If you think about it, that age is actually quite fitting for where we find ourselves as a church. Like your typical teenager, we've hit a major growth spurt. Those pants that fit last week are three inches too short, and we are starting to catch a glimpse of God's future for our church!



# OUR GROWTH

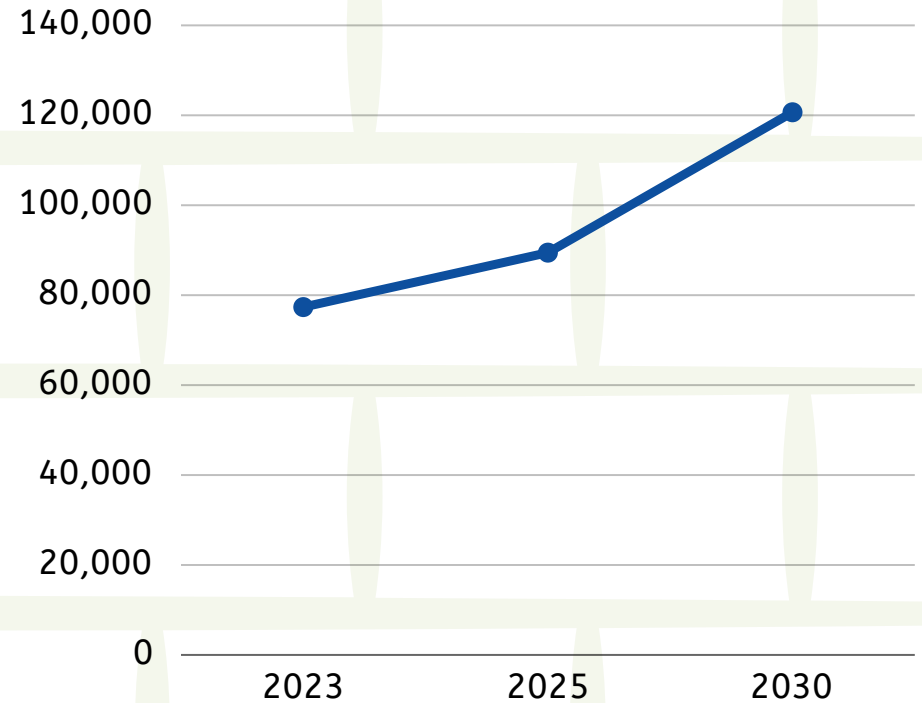


When The Peak began in 2010, we worshiped an average of 148 people in one service each week. Through 2024, **we're averaging 664 adults and children over three in-person and online services!** In general, our approach to growth has stayed the same. Yes, we always want our church to grow, especially if it means we are getting healthier, stronger, and providing a home for the increasing amount of people who find themselves without a church family.

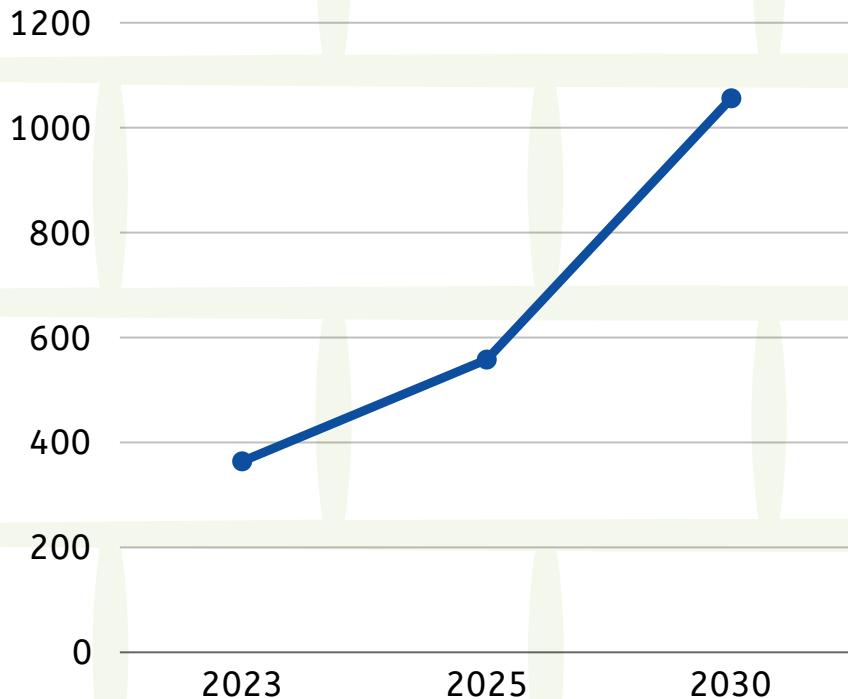
That being said, our goal is to always grow responsibly. The saying that we repeat around here is "as we grow bigger, let's grow smaller." Meaning, as our church expands, you can be confident that we will create/strengthen ministries to help our members find and stay connected (i.e. men's/women's ministries, community dinners, small groups, etc.).

Especially when you consider the recent and upcoming growth in our area, the timing of this conversation could not be more appropriate. We've learned that companies like Apple will be building a campus in Research Triangle Park. Vinfast and Wolfspeed are building in Chatham County. Fujifilm Diosynth Biotechnologies is building in Holly Springs. With these and other companies arriving in the Triangle, **experts estimate that the population of Apex will increase dramatically. The current population is 77,352; however, it is expected to increase to 89,459 by 2025 and 120,673 by 2030!** Everyone wants to be part of the Peak of Good Living!

### APEX GROWTH FROM 2023-2030



### PEAK WEEKLY AVG IN-PERSON WORSHIP ATTENDANCE



With thousands of people moving into our area in the coming years, the presence of a church like ours proves to be more and more critical. One that establishes the foundations of our faith on scripture, tradition, reason and experience. One that knows when to read scripture literally vs contextually. And one that is fully inclusive of everyone, regardless of their race, nationality, class or sexual orientation.

Based on our growth history (and without even considering the stats above), The Peak anticipates significant growth over the coming years. **Currently, 450+ people enter our church doors each week. That number is expected to grow to 558 in 2025 and 1,056 in 2030.**

# THE PLAN

In early 2023, The Peak's staff and leadership met with an architectural firm to discuss options for expansion. We focused on three areas:

- Adding a building where the playground currently resides to house our K-5 children's programming.
- Renovating and repurposing the current K-5 classrooms for our youth group, which encompasses middle and high school students.
- Widening our sanctuary on both sides to add more space for Sunday worship.

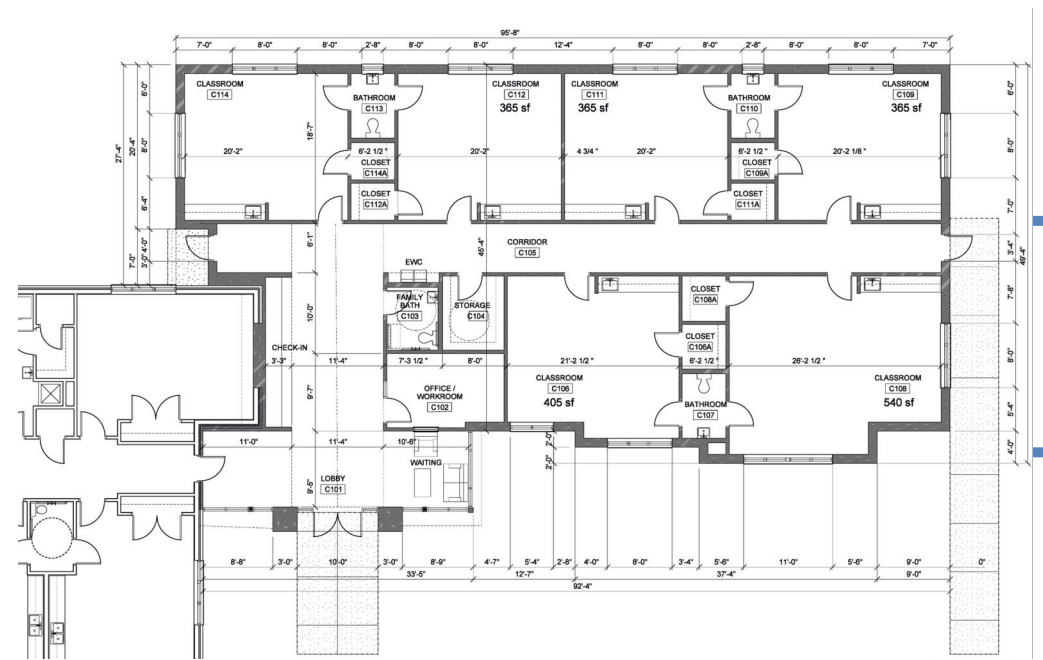


## CHILDREN'S WING

**Our proposed children's wing will add 4,585 square feet of space dedicated for our smallest disciples.** In our current configuration, we have to combine kindergarten through second grades and third through fifth grades due to a lack of space. Our new addition will allow each grade level to have their own designated room. Our children will be able to learn in an environment catered to them and their developmental level.

Additionally, a restroom will be attached to each classroom and each room will have its own water fountain.

Finally, with this expansion, the children's check-in station will be relocated to the new building, which will reduce foot traffic and **double the amount of space in our current lobby for coffee, connection, and fellowship between services.**



\*Architectural rendering of the proposed children's wing.



# NEW YOUTH MINISTRY SPACE

Right now, our youth ministry at The Peak must be creative in how they organize themselves on Sunday nights. Currently, they use a “set-up and tear-down” approach in which they repurpose our lobby and sanctuary to create a space that is conducive for friendship, games, activities and teaching. This renovation will change that.

The classrooms that are currently occupied by our children’s ministry (the wing closest to Salem Street) will be renovated for our middle and high school students. These multifunctional rooms will offer adequate space for both social and spiritual activities, including additional space for youth Sunday School.



**\*These images are simply prototypes. We’re going to let our youth help with the final design!**

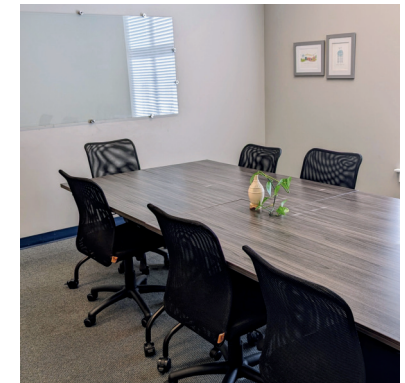
# SANCTUARY EXPANSION

To house more people in worship, we will expand our sanctuary approximately eight feet on each side. By enclosing both patio-like areas, we will add about 80 chairs to the sanctuary. When you multiply that over three services, that is nearly 240 more seats for adults looking for a church home!



## ADDITIONAL AREAS FOR RENOVATION

**Adult Discipleship Space:** After conversations with many teachers and small group leaders, we also discovered a need for more space dedicated to small groups and discipleship classes. Currently, we are very limited in our ability to offer adult classroom space during the week or on Sunday mornings for those looking to recreate a “Sunday School” approach. We are discussing moving our staff offices off-site so we can designate two additional classrooms for adult classes and groups.



**Playground:** With the removal of our current playground, we will add a new playground that will benefit our children, as well as the children who participate in Peak Beginnings (the tuition-free, early childhood education program that operates at The Peak). Our hope is to add more play structures and upgrade to rubber surfacing to protect our children from injuries.



# THE HOPE

We believe this season of ministry will be one of the most significant to our church's future. It is our opportunity to say "YES" to the following questions...

- *Were we paying attention to what God was doing in our midst?*
- *Were we strategizing for the future?*
- *Did we have enough belief in God and God's people that we could make this vision a reality?*
- *Did we truly want to see those who are spiritually disconnected become reconnected and grow in their faith?*



**Every time our church considers something this big, we not only want to ensure our congregation is properly informed, but excited about taking this step of faith together!**

As you prayerfully consider participating in this effort, here is some important information to keep in mind...

- **Duration of the campaign:** We believe it will take three years to gather these funds without overly burdening the congregation.
- **Timeline:** We are launching this campaign to our full congregation in Spring 2025, with the hope that those gifts will begin arriving in June 2025. This means the campaign would conclude in June 2028.
- **Breaking ground:** An official building start date has not been determined. The capital campaign firm that we hired to assist us with this project suggests that churches wait to break ground until 50% of funds have been acquired.
- **Cost:** We obtained cost estimates from trusted architects and contractors. They believe the sum for all the improvements listed here is between \$2.5M and \$2.8M.
- **Investment:** Understanding that projections could change, at the current rate of The Peak's growth, we expect that this expansion will provide enough space for mission and ministry until 2032.

**As important as this campaign is to the future of our church, it is vital that our current ministries and programs do not suffer in the process.** We are asking Peak families to pray, discuss and review your capacity to give above and beyond your support of the operating budget.

That said, you have a lot of flexibility in how you set up that additional contribution! Some options include...

**Option 1)** You might set up two reoccurring transactions each month for the next three years. One transaction will continue to go toward the general offering and the other will go toward the Making Room campaign.

**Option 2)** You continue giving to the general offering in the manner you are currently doing (monthly, yearly, etc.) Additionally, you plan to give another gift on an annual basis for each of the next three years. (Maybe this is out of an annual raise/bonus?)

**Option 3)** You continue giving to the general offering in the manner you are currently doing and then you complete your additional contribution to the Making Room campaign through one, singular donation.

*\*By the way, if you are curious about the different methods of giving that the church can receive, see the one page summary called “Methods of Giving” or contact our Finance Office at [finance@thepeakchurch.org](mailto:finance@thepeakchurch.org).*

Again, these are simply examples to help get you started. **Please know that whether you choose to make a recurring donation or a one-time gift, a gift of \$50,000 or \$5, we are so thankful for your willingness to step out in faith with us.** Furthermore, we have complete trust that God will provide all the resources we need in order to accomplish God’s mission for The Peak.

When you are ready to make a commitment, simply visit  
[www.ThePeakChurch.org/MakingRoom](http://www.ThePeakChurch.org/MakingRoom)

